

Business Applications on SharePoint without Programming

Transform your SharePoint collaboration platform into an integrated workplace

The CorasWorks Workplace Suite™ includes all the essential components necessary to build business applications on the Microsoft® SharePoint® platform, without programming. By extending SharePoint's collaboration capabilities, the CorasWorks Workplace Suite enables organizations to build an integrated online workplace, where all deployed solutions work together to achieve individual, team, and corporate objectives.

CorasWorks Workplace Suite

Delivering what you need to design, build, enhance, and support your virtual workplace

Whether you are building from the ground up, desire ready-built solutions, or are enhancing already deployed SharePoint solutions, the CorasWorks Workplace Suite provides organizations with an end-to-end integrated set of collaborative business applications:

- **Modular components** for architecting new solutions or enhancing existing ones.
- **31 pre-built solutions** for rapid deployment.
- **A maintenance-free workplace** based on the dynamic capabilities of the CorasWorks modular components, automatically updating modifications and changes to the workplace real time.
- **Comprehensive Support** with a complete set of documentation, training, technical support, and online knowledge base.

The end result is a dynamically integrated, role-based workplace delivering business solutions to information workers, teams, and managers by tying together the right people, information, and processes.

Modular Components

Drag and drop components to build custom, integrated workplace applications, providing ultimate flexibility through modular architecture

CorasWorks' modular architecture makes it very easy for even non-technical individuals to build customized business applications, by dragging and dropping interconnected components, or web parts.

The result is robust business solutions that are specific to the needs of individuals, teams, and your organization. "Time to productivity" is dramatically reduced because solution development becomes iterative, getting started quickly with the ability to make modifications and enhancements real time without the constraints of custom coding and long development cycles.

Comprehensive Support

Helping bring concepts to reality with a complete package of tools and support to deliver solutions

- **Complete set of documentation** to facilitate the planning, deployment, modification, enhancement, and management of the environment.
- **Training and Support** to assist business users and IT professionals with fundamental and/or advanced solution architecture.
- **Online knowledge base** and communities to share knowledge and experience in building and supporting solutions.
- **CorasWorks Network of Partners** with over 50 partners worldwide for businesses that desire external expertise for advanced implementation requirements.

31 Pre-Built Workplace Solutions

Drop-in pre-configured solutions to your SharePoint environment for ultra-rapid deployment

Included in the Suite are off-the-shelf business solutions to address the immediate needs for point solutions or provide a breath of enterprise applications, including solutions for:

- Information Technology
- Finance
- Human Resources
- Sales
- Engineering
- Executive
- Marketing
- Professional Services
- And other departments...

Entire workplaces may be built, or replicated and repurposed in a matter of minutes using the workplace wizard for ultra-rapid "re-deployment" of custom or pre-built solutions.

A Maintenance-Free Workplace

The software does the updating so you don't have to

With dynamic, modular architecture the software makes update changes across the workplace, so you don't have to. In addition, because the CorasWorks components are based on the Microsoft .NET Framework, you are leveraging your existing SharePoint platform, administrative, and technical resources, saving the time and expense of hiring additional personnel. Even routine maintenance of your solutions within SharePoint is dramatically enhanced with tools such as the CorasWorks Software Manager and Workplace Manager.

Six Core Components, One Complete Integrated Workplace -

The sum of the parts is a complete, integrated system based on the unique needs of your organization

The CorasWorks Workplace Suite Summer 2005 edition contains six core building blocks. While each of the components includes a wealth of capabilities and functionality, the true power is realized as the parts are “snapped together” to create a complete system that is dynamic, highly flexible, quickly deployed, rapidly modified, and easily maintained.

Workplace Roll-Ups™ Displays and Connections

View and access the information that teams and individuals need, the way they need it

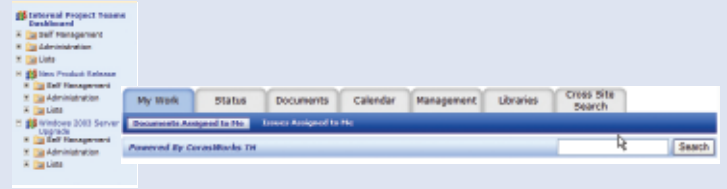
Roll-ups deliver information in much the same way as people work (e.g. in multiple teams, cross functionally, or with teams outside the organization). Roll-ups dynamically aggregate information that resides in a SharePoint list, library, or gallery. Through customized views, the roll-ups then display the information the way you need to see it.



Workplace Navigation™

Getting where you need to go in a single click

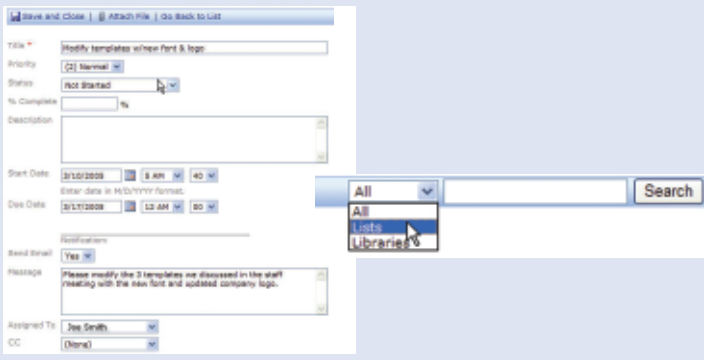
The CorasWorks navigation components connect all of your SharePoint sites into an integrated system. The improved navigation provides users with a complete view of all sites in their environment. In addition, administrators no longer need to update site links manually every time a new site is added or deleted.



Workplace Services™

Greater efficiency through notification and cross-site search

Notification components allow you to drive business activity, connecting people to information, through email notification. Our cross-site search extends the search capabilities of Windows SharePoint Services to allow you to perform full-text searches for information across a group of sites.



Workplace Solutions™

Reduce time to productivity with pre-built solutions

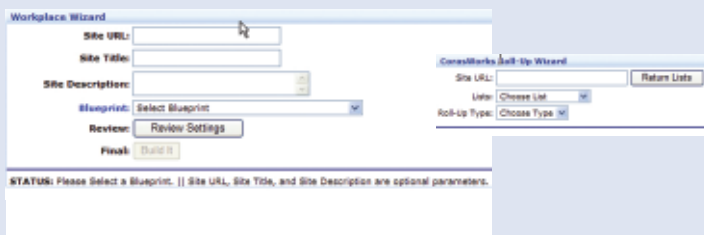
The Workplace Suite includes 31 pre-built and completely configurable business solutions ready to address immediate needs for point solutions or provide a breath of enterprise applications.

- Asset Tracking
- Change Request Tracking
- Customer Engagement
- Customer Service
- Document Management
- Executive Dashboard
- Help Desk
- HR Administrator Dashboard
- Internal Project Teams
- IT Department
- IT Director Dashboard
- Marketing Campaigns
- MBO Management
- Meeting Room
- My Workplace for Outlook
- Our Workplace
- Partner Extranet
- Performance Review
- Picture Phone Book
- Policy Approval
- Product Development
- Proposal Management
- Proposal Manager
- R&D Library
- Sales Pipeline
- Sales Pipeline - International
- Training Approval/Evaluation Tracking
- Travel Expense Approvals
- Travel Expense Approvals - International
- Vacation Approval
- Workplace Manager

Workplace Development

The democratization of workplace development - freeing IT for what they do best

The Workplace Suite comes with hundreds of features that are available out-of-the-box, without the need for development. However, individuals with development and/or advanced IT skills can create hundreds of highly customized components and solutions without the need for software code development.



Workplace Administration

Routine administration for business users, powerful capabilities for IT professionals

The CorasWorks Workplace Suite provides administrators with a broad set of tools making administration easier for CorasWorks solutions, workplaces, and for the underlying SharePoint platform. The Summer 2005 release further improves workplace administration with the addition of a new tabbed administration interface.

